



FREQUENTLY ASKED QUESTIONS

School & Work: Will my child...

1. Finish High School?
2. Go to college?
3. Have a job when he/she is an adult?
4. Need to work on job skills?
5. Need a job assessment through Vocational Rehabilitation?

Living Arrangements: Will my child...

1. Live in their own house or apartment (with or without a roommate or spouse)?
2. Continue to live at home with parents?
3. Live with other members of the family (brother, sister, extended family member)?
4. Live in supported community housing (group home)?
5. Need another option (specify): _____

Medical Care—Health Care Transition:

1. If my child sees a pediatric doctor, begin talking with them about the transition to adult medical care at age 18.
2. Which doctor will they transfer to for primary care?
3. Will they need to continue specialty care with adult providers?
4. How can I develop a Health Care Transition plan?
5. Does my child have a basic health notebook or way to organize their medical and service records?

Financial: Will my child...

1. Qualify for SSI or SSDI now or when they turn 18? Where do I apply?
2. Qualify for Medicaid now or when they turn 18? Where do I apply?
3. Continue to qualify for coverage on my insurance plan after age 18? Who do I talk with about this?

OUR HISTORY

“Innovative Approaches” is a grant funded project working to improve the system of care for children and youth with special health care needs up to age 21, through the collaborative efforts of parents, our community providers, and organizations.

...Contact Us...

If you would like more information OR would be interested in helping with this project, please call:

Stephanie Bunch

Innovative Approaches Project Coordinator

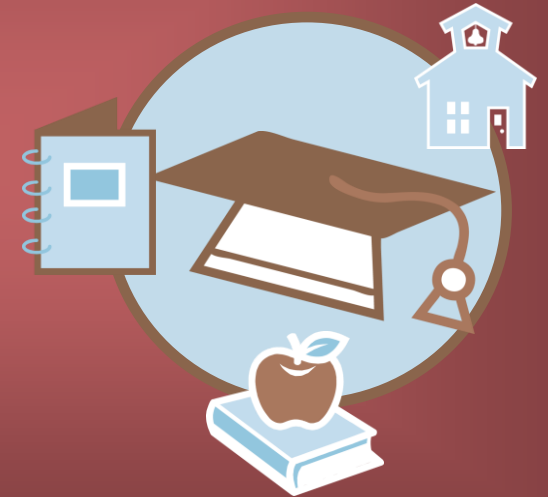
Office: 828-264-6636 * Fax: 828-264-4997

stephanie.craven@apphealth.com

To learn more about available resources for special health care needs visit:

April 2013

Innovative Approaches Watauga County



Planning Ahead for Community Services:

1. Do you know what services are available for you and your child?
2. Do you know how to access services—
*****Consider applying for available services now that typically have a waiting list**
3. Am I familiar with Innovations Services or CAP/MRDD? How do I apply?
4. Am I familiar with Respite Services? How do I apply?
5. Does my child qualify for CAP-C?
6. Will they qualify for CAP-DA?
7. Will they need personal care services?
8. Will they need private duty nursing services? If so, how do I apply for any of the above?

PREPARING FOR HIGH SCHOOL AND BEYOND

**Appalachian District Health
Department**

**126 Poplar Grove
Connector**



Preparing for **LIFE** after High School.

Preparation for transition should begin when a student is in Middle School

1. What will their day be like when they no longer attend school? Will they be able to work, engage in recreation activities, and perform daily chores around the house?
2. What kind of support does your child need to be successful - can they be alone, can they direct themselves throughout the day, or do they need set structure?
3. What about independent transportation—is it possible, can your child successfully use the bus system or obtain a driver's license?
4. Can your child answer the question ***“what do you want to do when you are done with school?”***
5. Do you know what your child is interested in? Does your child know?
6. Are you familiar with continuing education opportunities? - e.g., compensatory education at RCCC, CPCC, Beyond Academics at UNCG, the role of the Disability Services Office at 4-year universities?
7. Are you familiar with guardianship? Do you need full or partial guardianship?



Student Age-ACTION NEEDED

12-14 Years:

☐ Actively Participate in your child's IEP meeting at school – be sure to include social skills, communication, functional math and reading, self-help and self-advocacy skills on the IEP to help increase independence

By age 15:

- ☐ Set up Special Needs Trust
- ☐ Open MH/IDD case if not done already
- ☐ Explore work, residential and leisure options
- ☐ Assess and determine eligibility for adult services
- ☐ School updates Transition IEP

Age 16:

- ☐ Identify employment interests and skills the student can use in a career
- ☐ IEP meeting must also include any involved agencies to discuss future. Some agencies may need to be included at the family's discretion and invited by the family. The family needs to inform the school of the agency they are bringing to the table.
- ☐ Include activities such as career exploration, job sampling.
- ☐ Begin to identify community services that provide job training placement, other community resources or Vocational Rehabilitation
- ☐ Consider volunteer experiences
- ☐ Obtain state photo ID
- ☐ Begin to gather information regarding guardianship, health care proxy, and emancipation
- ☐ Determine need for Financial Support; Supplemental Security Income, Medicaid, state financial supplemental programs
- ☐ Identify health care providers

Age 16-18

- ☐ Examine social security benefits
- ☐ Collect information about residential or independent living services
- ☐ Apply to Vocational Rehabilitation for services if appropriate
- ☐ Transportation: use of public transportation, travel training, ride sharing, driver's license training if appropriate.
- ☐ Parents address legal issues of guardianship, health care proxy, and emancipation
- ☐ Continue to update transition plan
- ☐ Have student visit colleges/career training schools if appropriate
- ☐ A notice will be given one year before the child reaches the age of majority informing the student and parents of his/her IDEA rights, and that they will transfer from the child to the adult.

Age 18

- ☐ Male students register with Selective Service in birth month
- ☐ Parents review health insurance (private or Medicaid)
- ☐ Apply or recertify for Social Security Benefits
- ☐ Apply for financial support programs (Vocational Rehabilitation, independent living services, personal assistant services)
- ☐ Request school to do complete psychological profile, if needed.

Age 18-21

- ☐ Continue to review and update transition plan
- ☐ Prepare resume and /or portfolio
- ☐ Visit programs that may provide vocational or other services for the student after high school ends